

2009 WFM Missions Base – Organizational Overview



Kingdom Legacy
Ministerial Licensing

Service Desk Administrator – Dee Stover
Admissions Administrator - Robin Buick
Scheduling Administrator – Coreen Wildebour

Chief Operations Officer
COO
Ric Lumbar

Chief Executive Officer

CEO
Greg Wildebour

Property Administrator – TJ Boulet

Chief Financial Officer

CFO
Brad Groothuis

Business Administrator – Becky Lumbar

Executive Team
(Governing Board)

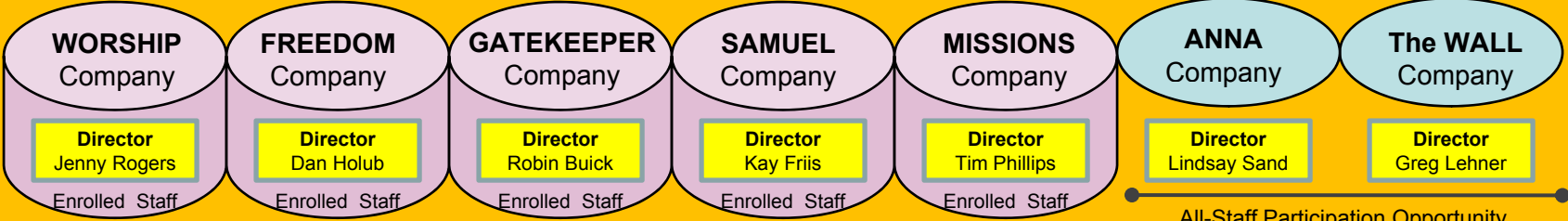
Senior Pastors - Ric & Christie Lumbar
Administration and Child Crisis Pastors - Brad & Jenny Groothuis
Staff Care Pastors - Randy & Carol Walker

Pastoral Team

Next Generation Pastors (K-12) - Lyle & Hope Kendrick
Prayer Pastors - Marcelo & Gabriela Rabellino
Communication Pastors - Jonathan & Becky Lumbar

The Field Spiritual Equipping Center and Furnace School of Ministry Pastors - Derek & Danielle Steen

Staff Admissions Administration



2009 Enlisted Missions Base Prayer Room Staff

Managed Organizations

Development Dir - DJ Steen
Child Services Dir – Melissa Brisbin

Center to Restore Trafficked and Exploited Children

Exec Dir – Nick Whaley

The ARK (Iowa City House of Prayer)

Dean of Students – Derek & Danielle Steen

The FIELD Spiritual Equipping Center

MIDWEST PRAYER CENTER a Night and Day house of Prayer